

bullmer at the Texprocess trade fair,
14.-17.5.2019, Messe Frankfurt am Main (Germany), Hall 4, Stand B60

Smarter and More Efficient Production for Cutting Industry. With Clouver from ProCom.

Aachen (Germany), April 9, 2019 – Clouver from ProCom GmbH is an Industry 4.0 product for knife, laser, plasma, and waterjet cutting that makes processes more transparent and production more efficient. Clouver links production with its digital image. For example, production processes can be analyzed in detail, hidden production costs can be identified, and bottlenecks can be detected at an early stage. Clouver also provides an OEE* value, which is an indicator for detecting and correcting drops in productivity due to production performance or scrap. This solution also provides the basis for condition-based maintenance. For the machine manufacturer bullmer GmbH (Mehrstetten/Germany), this is reason enough to offer Clouver as an option for its customers.

Anyone interested can find out what Clouver can do at the bullmer showroom in Mehrstetten (Germany) and at the Texprocess show. At its stand (Hall 4, Stand B60), bullmer will present on four monitors the data that Clouver has evaluated, how the IoT solution prepares information for decision-makers, machine operators, and production managers, and the added value that production operations can get from it. The demo system uses live data from running machines in a field test.

Evaluation Specific to Roles—Transparency at All Levels

IoT manager Ernst Schmelcher from bullmer emphasizes the advantage of role-specific Clouver evaluations: "Machine operators see the operating and maintenance status of their machine, plant managers have an overview of the entire production area from their office, and decision-makers receive reliable, compact information that helps them with strategic decisions. Everyone gets the information that they need for their work in a clearly arranged form."

Flexible Maintenance Planning Instead of Rigid Intervals

One component of Clouver that saves money is the maintenance monitor. It is the basis for demand-related service. Based on operating hours, oil levels, or other criteria, the monitor determines when the next planned maintenance should be performed. Maintenance and repairs can thus be planned more easily and inexpensively than with rigid maintenance intervals. "Usage-based maintenance helps to avoid unplanned downtime," adds Schmelcher. Machine

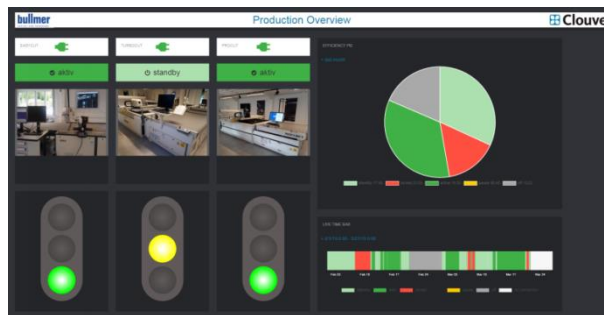
builders can also use Clouver to compare machines of the same type and to optimize service on the basis of a pool of experience.

Early Detection of Machine Wear and Defects

In the future, in addition to data such as cutting distance traveled, more information will be used to refine condition-based maintenance. For example, the current drawn by drive motors can provide an indication of wear or imminent defects. Bullmer also wants to make wear parts management easier for end users, because Clouver data can be used to evaluate cutting processes, which enables prediction of knife wear.

Industry expert Schmelcher sees great potential in Clouver: "Clouver can provide relief to machine operators in many areas. The solution provides valuable information for increasing productivity. It could therefore give our customers a competitive advantage."

* OEE = Overall Equipment Effectiveness



Big or small: Clouver makes cutting processes and machine status transparent and provides critical information for increasing productivity. (Photos: bullmer)

Print-ready images can be downloaded from [this link](#).

Press and public relations:

ProCom GmbH
Stefanie Lakemper
Luisenstrasse 41
52070 Aachen
Germany
Phone +49 241-51804-200
stefanie.lakemper@procom.de
www.procom.eu

Press'n'Relations II GmbH
Ralf Dunker
Graefstrasse 66
81241 Munich
Germany
Phone +49 89 5404722-11
du@press-n-relations.de
www.press-n-relations.de

bullmer GmbH
Johanna Duve
Heutal 7
72537 Mehrstetten
Germany
Phone +49 7381 183-137
Johanna.Duve@bullmer.de

In case of publication, please provide us with two voucher copies.

About ProCom

ProCom Automation offers systems with optimization intelligence as software solutions for smart resource planning for tools, material and processes.

As a development specialist for cutting and separating procedures, ProCom has been equipping machine series with highly developed CNC software, hardware and CAM solutions for over 40 years. The company is investing both in this established, expandable area and in forward-looking services in the field of IoT-solutions with the technology Clouver "ready for Industry 4.0" in the European and Chinese markets.

About bullmer

The company bullmer GmbH is a medium-sized company and is one of the largest internationally active providers of spreading machines, cutting machines, material handling systems, and CAD systems.

What started 80 years ago as a metalworking plant in the Swabian Mountains is now a global industry leader. Bullmer GmbH has over 150 employees producing for Germany, Europe, Asia, North and Central America, Australia, and Africa.